

cover·ME

INNOVATION that stands out

coverME is the *EXPERIENTIAL VENDING MACHINE* by **DEDEM** designed to combine design, technology, and instant customization.

A **smart, colorful** and **intuitive experience** that transforms a simple image into a **unique cover, printed on demand**.

Ideal for Shopping Malls, leisure areas, cinemas, arcades, and high-traffic areas, **coverME** is a compact, **fully automatic machine** that attracts attention and encourages interaction.



AN IDEA that speaks to everyone

Colorful and with a mobile-friendly interface, **coverME** appeals to a wide and diverse audience: from young people who are always connected and ready to personalize everything, to adults looking for an **original souvenir**.

A simple and engaging experience, designed for those who love to stand out, for those who want to create independently, and for those looking for **something special, right away**.



DATA SHEET

Model: coverME

Weight: 338 Kg

Products: Custom covers

Payment options: Credit card reader, NFC, Banknotes

Internet Options: Ethernet cable WiFi/4G-5G

External Display: LED Touch

Consumables: Cover Kit and recyclable packaging

Power consumption: 460W

Power supply: 200-240V - 50/60Hz

Compliance: CE



HOW DOES coverME WORK?

 **Impactful design:** catches the eye and stimulates curiosity

 **Immersive experience:** users enjoy an engaging and memorable moment

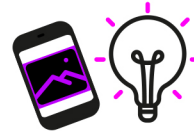
 **High perceived value:** useful, cool product and immediate service

 **No operator required:** the process is completely automatic

 **Sustainability:** kit with recyclable packaging and integrated environmental messages



1° STEP
CHOOSE YOUR PHONE MODEL



2° STEP
UPLOAD YOUR IMAGE OR GET INSPIRED



3° STEP
SCAN THE QR CODE



4° STEP
PICK AND UPLOAD YOUR IMAGE



5° STEP
TAKE YOUR COVER



6° STEP
RECYCLE YOUR COVER PACKAGING

coverME

It is not just a vending machine: it is an experiential machine, capable of combining entertainment, utility, and creativity.

